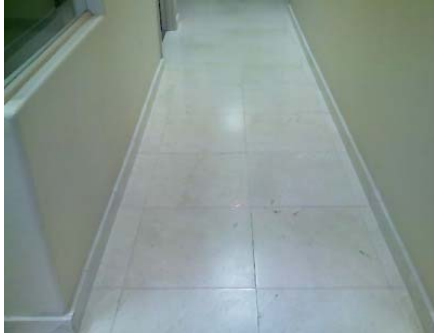


Product Information Sheet



HS 25

High Solids Floor Wax



Features:

- **Brilliant Gloss**
- Two coats does the job of three
- **Durable** – very long lasting
- Black mark resistant
- Odourless
- **Fully Biodegradable**
- Labour Saving Concentrated Formula
- Detergent resistant, scrubbable
- Resists scuffing
- Slip resistant
- **Very low to no V.O.C.'s**
- **Environment friendly**

Benefits: Unique highly active formulation of polymers and copolymers enables one coat of Lord and Partners HS 25 to provide the gloss and durability normally requiring two coats of ordinary floor finish, on well maintained, sealed floors.

Brilliant, Long Lasting Protection: L & P's HS 25 dries to a high gloss, slip-resistant finish. Is ideal for high traffic areas where wear and safety are desirable.

Less Frequent Application: Floors retain showroom finish for longer periods of time.

Durable: Resists scuffing, black marking and powdering.

Labour Saving: L & P's HS 25 concentrate saves application time. Fewer coats are needed. Reduces downtime during application. Maintenance personnel are free for other duties.

Self Levelling: For a more even, beautiful finish.

Detergent Resistant Formula: Easily maintained by normal mopping or scrubbing with non-ammoniated cleaners such as Lord and Partners Super Green.

Easy To Maintain: The L & P's HS25 shine will last even longer with a proper maintenance program including spray butting. Sweep regularly with lightly treated dust mop to remove loose grit and dirt that can harm the HS25 finish. Clean with mild detergents such as Lord and Partners Super Green when needed, rinse with clear water and allow to dry. Spray buff regularly with HS25 Spray and Buff.

East to Apply: Use L & P's HS25 on all types of resilient floors, terrazzo and other floor types. Prepare floor by stripping with L & P's Mop and Strip rinse thoroughly and allow to dry. Apply L & P's HS25 with cotton mop or suitable applicator. The special formula reduces mop dry for less application effort. HS25 acts as its own sealer. Once the seal coat has been applied, only one finish coat is required for a "showroom shine." Approximately 1,500 – 2,000 sq. ft of coverage is obtained per gallon.

"Protecting the environment for tomorrow"™